

Corner Trim - Inside



Figure 1. Corner Trim- Inside (2½’’x 2½’’)

Depending on project requirements, the RELINE® Corner Trim - Inside is designed to be installed as an inside corner but can also be installed on the outside of an existing wall. The Corner Trim needs to be installed ahead of the RELINE® panels.

Corner Trim - Inside Installation

Install Corner Trim vertically or horizontally as required.

There are two ways to fasten inside corner trim

- Use silicone.
- Mechanically fasten using screws at 24’’ on center.

Miter corners as required. Provide ¼’’ clearance at ends and sides of panels, as required. Refer to Figure 2.

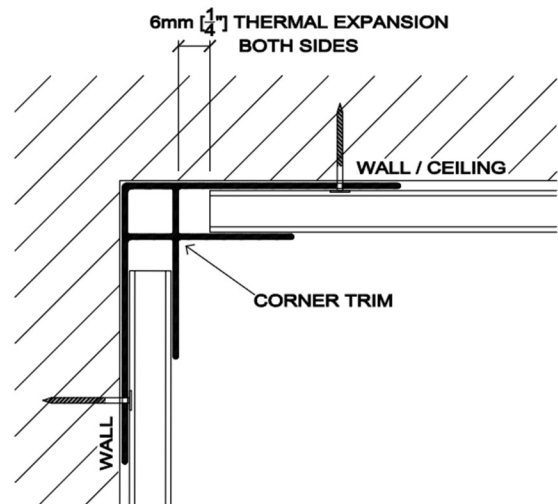


Figure 2. Corner Trim - Inside Installation

Corner Trim - Outside Installation

To install the Corner Trim as an outside corner, use silicone or mechanically fasten it to the wall using screws at 24’’ on center. Provide ¼’’ clearance at ends and sides of panels, as required. Refer to Figure 3.

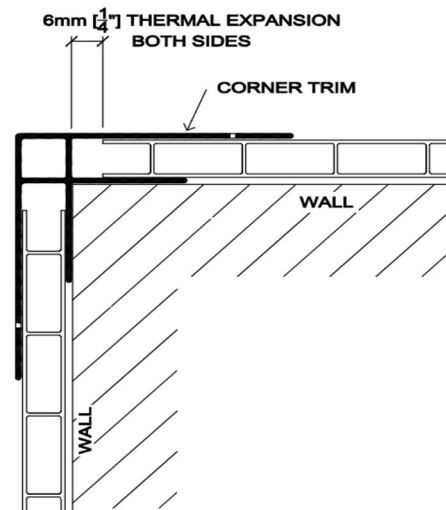


Figure 3. Corner Trim - Outside Installation