

2" x 2" Outside Corner Trim

The Outside Corner Angle Trim is an alternative to our Rounded and Square Edge Corner Trim - Refer to Technical Bulletins #5 & 11. The Corner Angle Trim is a surface mounted component that is secured in place with a mechanical fastener or adhesive.



Figure 1 - 2"x 2" Corner Angle Trim

Typical Detail for Outside Corner

Install 90° Corner Angle Trim vertically or horizontally as shown in Figure 2.

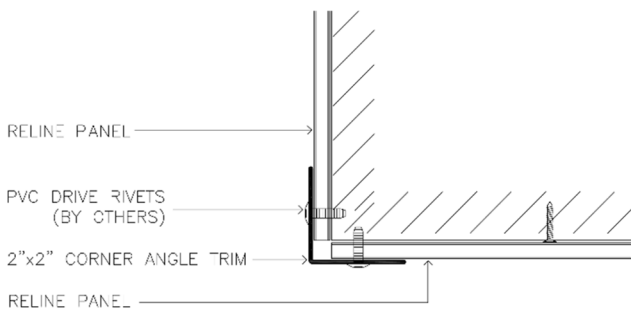


Figure 2 - 2"x 2" Corner Angle Trim

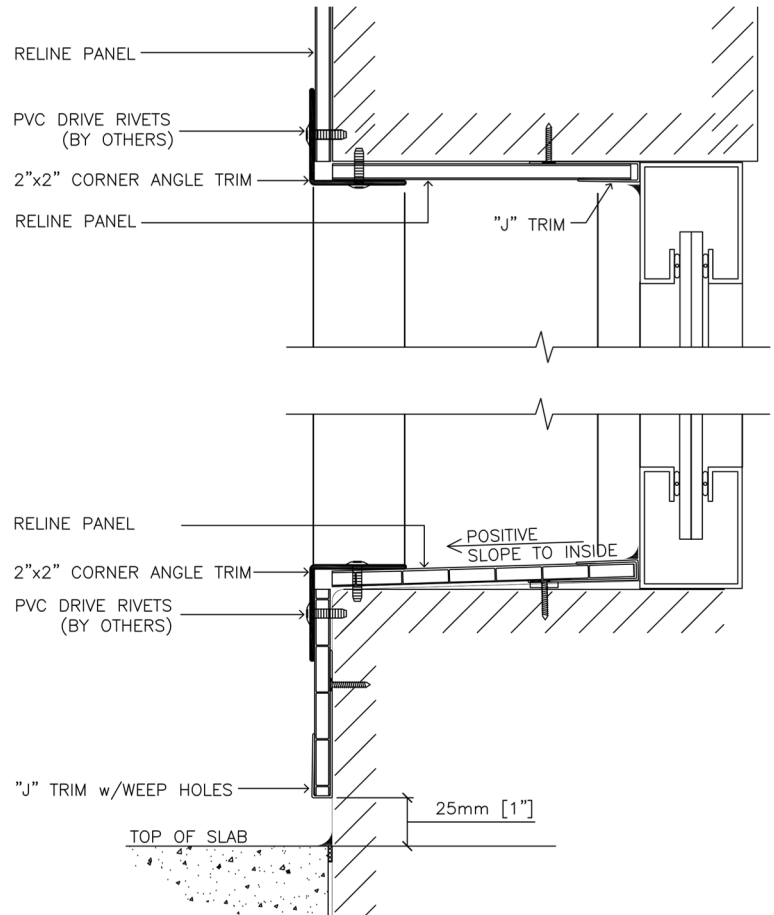


Figure 3 - 2"x 2" Corner Angle Trim

Typical Details for Header & Sill Installation

Install RELINE Panel providing 1/4" clearance at ends. Install Corner Angle Trim with PVC Drive Rivets at 24" o.c. or as required. Refer to Figure 3. Alternatively, the Trim can be secured in place with adhesive.