

90° Corner Trim



Figure 1 90° Corner Trim (2½" x 2½")

Depending on project requirements, the RELINE® 90° Corner Trim can be installed on the inside or outside of an existing wall. The Corner Trim needs to be installed ahead of the RELINE® panels.

Inside 90° Corner Trim Installation

Install 90° Corner Trim vertically.

There are two ways to fasten inside corner trim

- Use silicone
- Screw through face and cover holes with plugs
- Miter corners as required. Provide ¼" clearance at ends and sides of panels, as required. Refer to Figure 2.

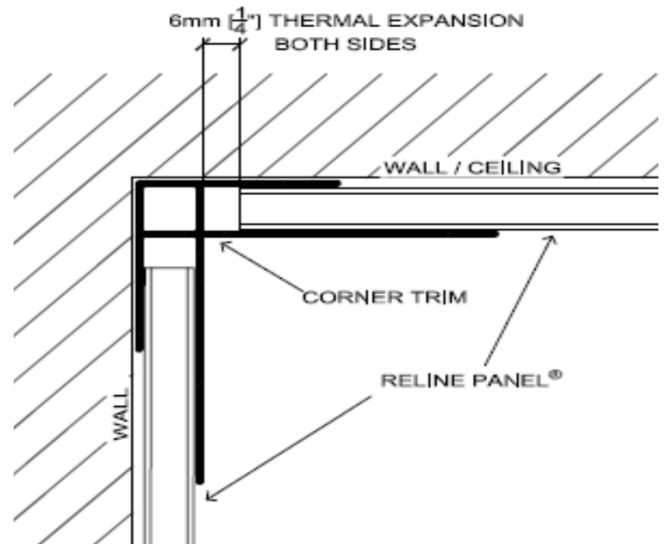


Figure 2. Inside 90° Corner Trim Installation

Outside 90° Corner Trim Installation

To install 90° outside Corner Trim mechanically fasten it to the wall using screws at 24" on center. Notch the back of RELINE® panels in order to accommodate the nail/screw head. Provide ¼" clearance at ends or sides of panels, as required. Refer to Figure 3.

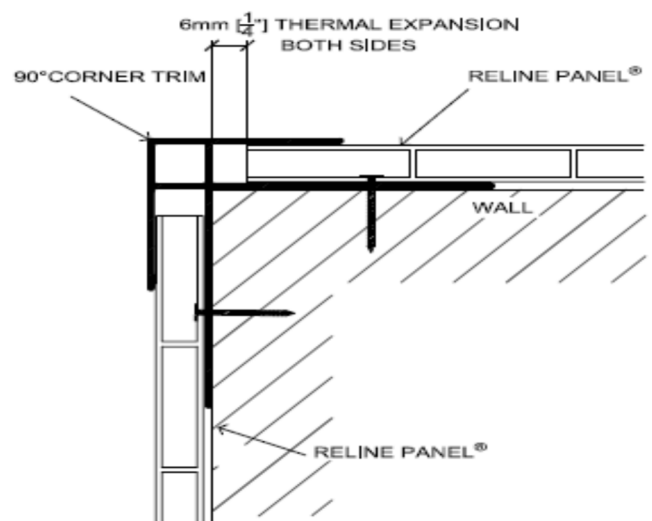


Figure 3. Outside 90° Corner Trim Installation