

Door Jambs

First, install corner trim. Depending on the width of the door frame/jamb and the distance the wall extends past it, the inner edge of the corner trim may need to be site cut. Use PVC shims as required.

Once corner trim is installed, caulk the perimeter on both sides of the door frame.

Prior to installing RELINE® panels, notch the back in order to accommodate the nail head. Ensure a gap of 6mm or ¼" is left for expansion/contraction. Refer to figure 1 for door jamb detail.

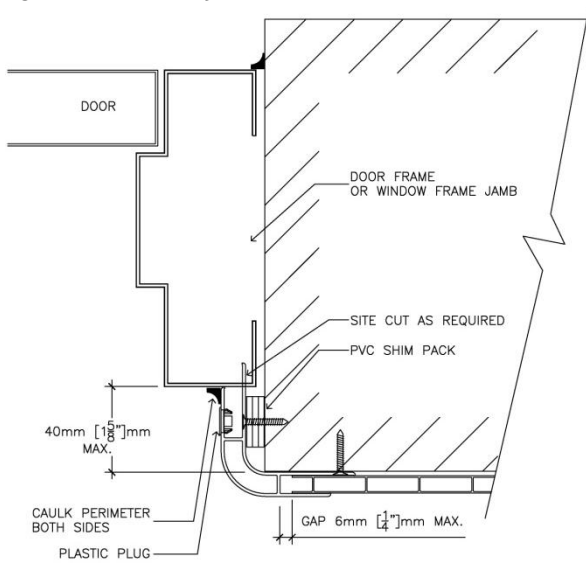


Figure 1 Door Jamb Detail

Window Headers

At window headers, make use of the corner trim and J-Trim, as shown in figure 2. Ensure a gap of 6mm or ¼" is left for expansion/contraction. Caulk between window and J-Trim.

Window Sills

Window sills require two pieces of J-Trim (slab and window).

The rest of the installation procedure is similar to window headers. Refer to figure 3.

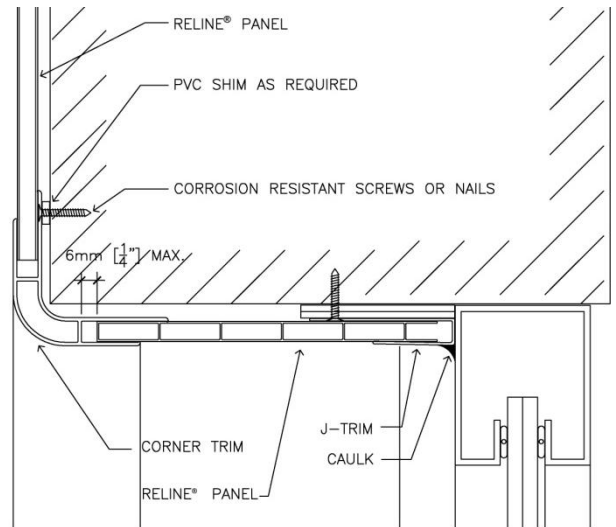


Figure 2 Header Detail

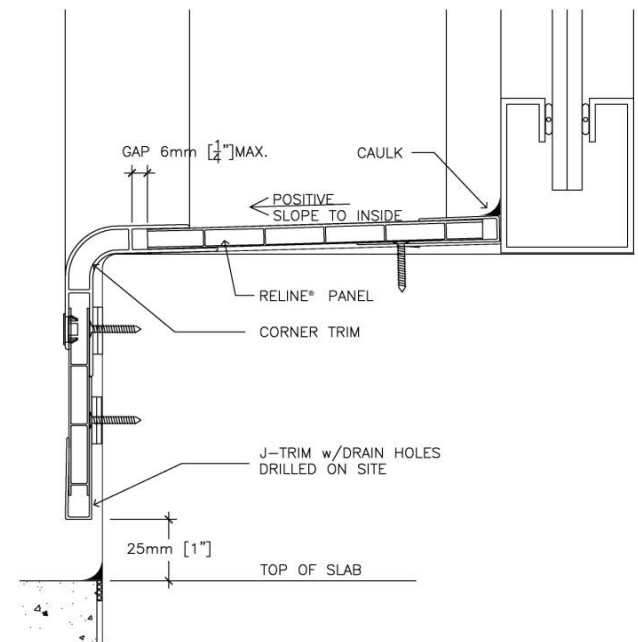


Figure 3 Sill Detail