

### Drip Trim

Drip Trim can be used as an alternative to J-Trim. It is installed above the concrete slab for RELINE® wall installations.

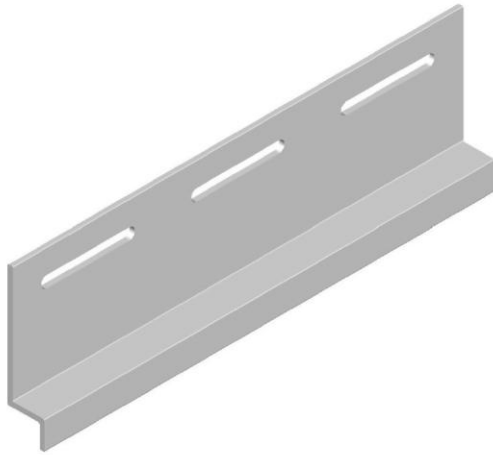


Figure 1 Drip Trim (1 5/8" x 3/4")

### Drip Trim at Slab Installation

Drip Trim is installed in a similar fashion to J-Trim. Mechanically fasten at the slots provided. Fasteners shall not be more than 24" apart. Refer to Figure 2 for a typical installation detail.

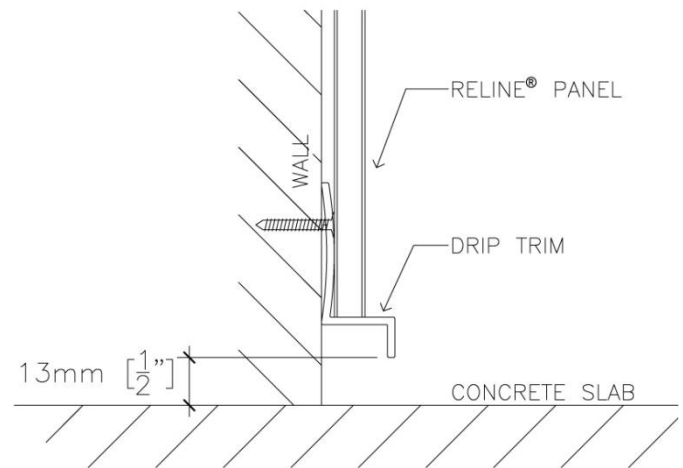


Figure 2 Drip Trim Completed Installation