

H-Trim

H-Trim is used to connect rows of RELINE® panels on both ceiling and wall installations.

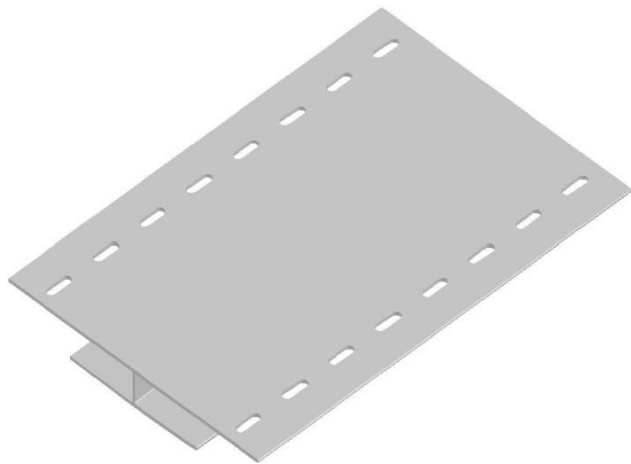


Figure 1 H-Trim (4" x 3/8")

Ceiling Installation

Install H-Trim on the end of the first row or RELINE® panels, leaving 1/4" for expansion. Mechanically fasten the H-Trim on the other side at 24" on center. Repeat process for subsequent rows. Monitor joints to ensure panels are aligned and remain parallel. Figure 2 shows the completed H-Trim installation, with RELINE® panels on both sides.

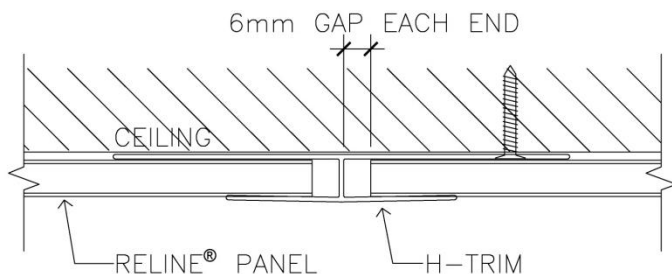


Figure 2 H-Trim Completed Ceiling Installation

Wall Installation

RELINE® panels installed on walls are more exposed to wear and tear than those installed on ceilings. Depending on the use and function of the building, panels can be damaged and need to be replaced. Because RELINE® panels are interlocked, it is often necessary to remove numerous panels before getting to the damaged one. This is time consuming and costly.

Therefore, for long spans of RELINE® panels, it is recommended to use H-Trim every 20 or 30 panels. This is a preventative measure that makes it easier to replace any panels should they become damaged in the future. It is not a requirement for installing RELINE® on walls. The installation process is the same as that for ceilings. Refer to figure 3.

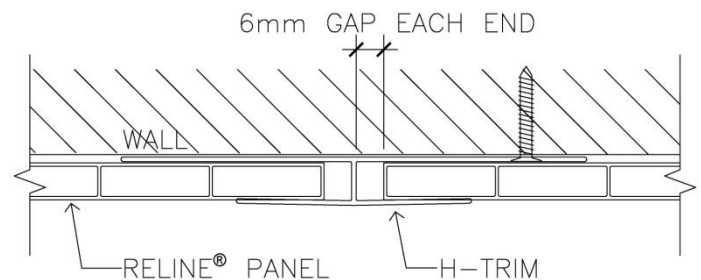


Figure 3 H-Trim Completed Wall Installation

Note from figure 3 that the interlocking legs of the RELINE® panels need to be cut off before inserting the panels into the H-Trim.