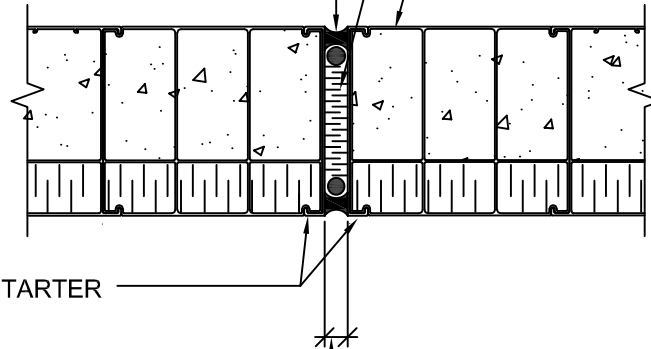


CAULKING AND BACKING ROD
REMOVE INSULATION AS REQUIRED
AFTER CONCRETE IS SET

RIGID INSULATION
FULL WIDTH & FULL
HEIGHT OF WALL

200mm[8"] CF8i WALL



UNCORED STARTER
EACH SIDE

EXPANSION JOINT AS
REQUIRED (25mm[1"] MIN.)

- DETAIL FOR FORMWORK ONLY
- ALL DETAILS, REINFORCING STEEL & CONCRETE MUST
BE DESIGNED & CONFIRMED BY PROJECT STRUCTURAL
ENGINEER AND / OR PROJECT ARCHITECT.



Nuform Building Technologies Inc.
100 Galcat Drive, Unit #2,
Woodbridge, Ontario, Canada L4L 0B9
Tel: 905-652-0001 Fax: 905-652-0002
Toll Free: 1-877-747-9255
Web Page: www.nuformdirect.com

200mm[8"] CF8i WALL - EXPANSION JOINT



DRAWING NO.	T821	
COPYRIGHT 2024		
SCALE:	REVISION No.:	R00