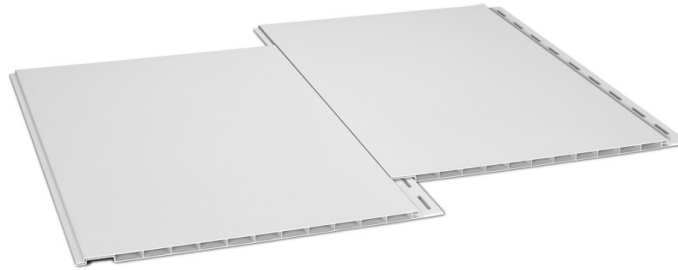




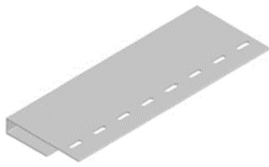
# Installation Guide

Version 5.0

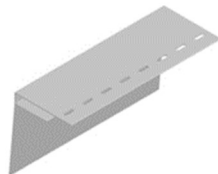


RELINE is available in 12" and 18" wide panels by 3/8" thick, providing a finished face with interlocking joints and fastened at 24" maximum. Trim accessories are available for perimeter conditions, edges of openings and panel joints.

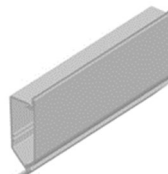
## TRIM & ACCESSORIES



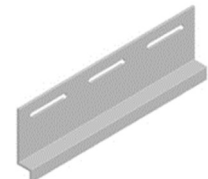
J-Trim (2 1/4" x 3/8")



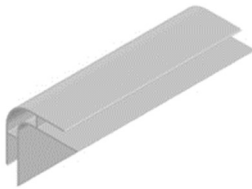
F-Trim (3" x 2 1/4")



Crown/Base Molding (3 1/2" x 1")



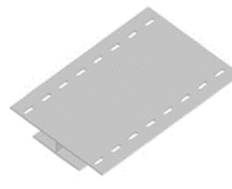
Drip-Trim (1 5/8" x 3/4")



Corner Trim with 90° Rounded  
(2 1/2" x 2 1/2")



Corner Trim with 90° Square Edge  
Edge (2 1/2" x 2 1/2")



H-Trim (4" x 3/8")



Cove Trim (1 1/4" x 1 1/8")



Outside Corner Angle Trim  
(2" x 2")



Plug (3/8" Ø)



Spacer (1" Ø x 3/8")






Concrete Screw (3/16" Ø x 1 1/4")  
Phillips Flat Head



Stainless Steel Screw #8 x 1 1/4"  
Phillips Truss Head

PURCHASER IS SOLELY RESPONSIBLE FOR DETERMINING THE SUITABILITY FOR USE OR APPLICATION OF RELINE AND ALL COMPONENTS THEREOF, AND WHETHER THE MATERIALS MEET ALL REQUIREMENTS OF APPLICABLE BUILDING CODES AND SAFETY CODES FOR THE SPECIFIC APPLICATIONS.

 PLEASE READ GUIDE COMPLETELY BEFORE INSTALLATION.  
 FOLLOW THE RECOMMENDED FASTENING AND INSTALLATION PROCEDURES.  
 IMPROPER INSTALLATION MAY CAUSE BUCKLING AND PERMANENT DAMAGE.



Scan QR Code for Typical Details →

**NOTICE: IMPROPER STORAGE, IMPROPER INSTALLATION OR INADEQUATE GAPS FOR EXPANSION AND CONTRACTION MAY CAUSE WARPING, BUCKLING AND PERMANENT DAMAGE - SEE BACK PAGE**

## RECOMMENDED TOOL LIST

- RELINE Expansion Tool
- Ladders and/or scaffolding
- Work table
- Hammer
- Chalk line
- Utility knife
- Drill (with drill and driver bits)
- Caulking gun
- Tape measure
- Putty knife
- Square
- Level
- Tin snips
- Sliding radial arm saw \*\*
- Caulking/Sealant - one part neutral cure, oxime silicone such as:
 

Dow 1199 by DOW CORNING	phone: 1.800.322.8733	web: <a href="http://www.dowcorning.com">www.dowcorning.com</a>
Tremsil 600 by TREMCO	phone: 1.800.363.3213	web: <a href="http://www.tremcosealants.com">www.tremcosealants.com</a>
Bondaflex Sil 200GPN by BONDAFLEX	phone: 1.800.641.0234	web: <a href="http://www.bondaflex.com">www.bondaflex.com</a>

\*\* Use a fine tooth blade (12 or 16 teeth per inch) with the blade installed in the reverse direction. Some applicators prefer hand-held circular saws with a similar blade installation.

## RELINING MATERIAL

1. Panels can be ordered in 12" & 18" widths and standard lengths of 10', 12', 14', 16', 18' or 20', or can be ordered cut to size from the factory.

2. When ordering panels cut to size from the factory, ensure that all the wall heights and ceiling dimensions are consistent throughout the building and adjust the dimensions for the recommended clearances. Wall heights and ceiling dimensions may vary due to building irregularities.

3. Panels shall not sit flush with the floor. Panels should be installed a minimum of 1/2" above the finish floor using the J-Trim or Drip Trim. The Drip Trim is recommended in order to allow for proper drainage if RELINE is installed in an environment where water is present (i.e. car wash or where power washing will occur).

## FASTENERS

1. Use only corrosion-resistant (galvanized, stainless steel or aluminum) nails or screws with a minimum head diameter of  $\frac{3}{8}$ ". The recommended fastener length is  $1\frac{1}{4}$ " for screws and  $1\frac{1}{2}$ " nails.

**⚠ Do not use staples. Do not use Power Nailing guns.**

## PREPARATIONS

1. Inspect and plan the job in advance. Check surfaces for straightness and install furring, where necessary. Surfaces shall be uniform and straight.

2. RELINE panels shall be supported and fastened every 16" to 24" maximum. Install continuous nailing strips or supports at the perimeter and around all openings to support all trims.

3. If the RELINE panels run parallel to ceiling joists, roof trusses or wall studs, install additional 1" x 3" wood furring or metal strapping at 16" to 24" maximum.

4. Install furring or strapping at the location of butt joints, for support of the H trim.

5. When planning to suspend lighting or other items, install adequate support at each location, as required.

6. Prior to start of installation, install all air barriers and vapour barriers as required. Provide a sealed air/vapour barrier such as 6 mil polyethylene, when necessary.

## BASIC RULES

1. All panels shall slide free, after fastening, to allow for expansion and contraction. Allow a minimum of  $\frac{1}{16}$ " (about the thickness of a dime) between the back of the fastener head and the nailing strip of the RELINE panel or the trim.

⚠ **Do not nail tightly. Doing so may cause the RELINE to be permanently damaged.**

2. Fasteners shall be not more than 24" apart and located 4" to 6" max. from ends of panels and trims.

3. Always fasten in the center of the slots. If you must fasten near the end of a slot to hit a furring strip, extend the length of the slot with a slot-punch tool or router.

⚠ **Do not fasten at the end of a slot. Doing so may cause the RELINE panel or trim to be permanently damaged.**

4. Leave a minimum of  $\frac{1}{4}$ " clearance at each end of all panels and trims to allow for expansion and contraction.

⚠ **No clearance at ends of panels can cause ripples in the panel. Doing so may cause the RELINE panel to be permanently damaged.**

5. For vertical panels supported at the bottom, provide a minimum of  $\frac{1}{2}$ " clearance at top.

⚠ **Inadequate clearance can cause ripples in the panel and may cause the RELINE to be permanently damaged.**

6. **DO NOT FACE FASTEN**, since RELINE panels expand and contract with temperature changes.

⚠ **Face fastening can cause ripples in the panel. Doing so may cause the RELINE panel to be permanently damaged.**

7. Install panels using the RELINE Expansion Tool to achieve a slight gap ( $\frac{1}{32}$ ") between panels at the interlocking joint to allow for expansion and contraction. Alternatively, the blade of a putty knife can be used to set the width of the joint.

⚠ **Do not fasten with tight joints in cold weather or cooler than normal ambient temperatures. Doing so may cause the RELINE panel to be permanently damaged.**

8. Use a one-part, neutral cure, oxime, silicone sealant to seal all corners, to seal around all fixtures and to repair small holes.

## WALL INSTALLATION

1. For RELINE panels on walls and ceilings, install the wall panels first.

2. Plan the layout of the RELINE panels and trims to achieve an even spacing and to align with other adjacent work. Determine panel layout and width of first panel so that the first and last panel in each wall section will be a minimum of 8" wide.

3. Use a chalk line to establish a horizontal line across the base of the wall and a vertical line for the edge of the first panel.

4. Begin by installing Drip Trim or J-Trim along the bottom of the wall. Drill  $\frac{1}{4}$ " dia. drain holes in the bottom of the J-Trim at 16" on center.

5. Fasten Outside Corner Trim at 24" o.c. and notch back of panel to accommodate fastener. Fasten Inside Corner Trim with silicone or screw thru face and cover holes with plugs. Mitre corners as required.

6. Install Trim at top of wall if top of panels are not hidden behind other ceiling finish. Install panels into Corner Trim or J-Trim. Alternatively, use F-Trim, Cove Trim or Multi-Use Trim. For outside corners, mechanically fasten or glue Outside Corner Angle after wall panel is installed.

## CEILING INSTALLATION

1. For RELINE panels on walls and ceilings, install the wall panels first. Around perimeter of ceiling, use Corner Trim, J-Trim, F-Trim or alternatively, use Multi-Use Trim or Cove Trim after all panels are installed.

2. Determine panel layout and width of first panel so that the first or last panel in each course will be a minimum of 8" wide.

3. Use a chalk line to establish a straight line across the ceiling for the end of the first course. Plan the layout of H-Trim to achieve an even balance or to align with adjacent work.

4. Install into the F-Trim, Corner Trim or Cove Trim at one corner of the ceiling. Be sure to leave room for  $\frac{1}{8}$ " expansion at panel sides and for  $\frac{1}{4}$ " expansion at panel ends.

5. Fasten every 24" maximum, positioning fasteners in the center of the slots. Do not fasten tightly. Fasten within 4" to 6" of the end of the panels.

6. Install H-Trim at joints leaving  $\frac{1}{4}$ " minimum, for expansion. Nail the H-Trim on the other side to wood supports at 24" on center.

⚠ **For best appearance, monitor the joints to ensure that the panels are aligned and remain parallel with panels on opposite side of H-Trim.**

7. For the last course, cut the length of the panels, to suit, leaving room for expansion in the F-Trim, Corner Trim or Cove Trim ( $\frac{1}{4}$ " minimum) at each end and  $\frac{3}{8}$ " on the side. Install into perimeter trim and pull panel back  $\frac{1}{8}$ ", to interlock the last joint.

8. Install Multi-Use Trim if applicable.

## CLEANING

1. To remove common dirt and grime and to maintain the appearance of RELINE, wash using a general cleaner, applied with a sponge or soft bristle brush. The recommended cleaner is REVIVE cleaner, available from Nuform Building Technologies Inc.
2. For localized areas with heavy stains, wipe clean with NUFORM Graffiti Remover.
3. For removal of stubborn stains and other marks, contact your nearest NUFORM representative for recommendations.
4. Some cleaners may damage the finish of RELINE and must be tested on a small sample area first. Some of the non-recommended cleaners are Clorox, Pine Power, Tide Power, Grease Relief, Paint Thinner and Nail Polish Remover.
5. Protect eyes and skin from direct contact with cleaning agents.
  - ⚠ **Follow the precautionary labeling instructions on all cleaning agent containers.**

## • NOTICE •

### STORAGE

- ⚠ **ALL RELINE MATERIAL SHALL NOT BE TIGHTLY HELD (REMOVE TOP MEMBERS FROM CRATING UPON DELIVERY) AND RELINE SHALL NOT BE STORED IN ENCLOSED HOT SPACES, SINCE THE COMPONENTS MAY DEFORM. STORE MATERIAL LEVEL AND STRAIGHT. WHEN DAILY TEMPERATURES ARE CONSISTENTLY OVER 30 °C (86 °F), STORE THE MATERIAL IN THE SHADE OR COVER WITH LOOSE TARPS THAT PROVIDE SHADE, BUT DO NOT RESTRICT AIR FLOW.**

### INSTALLATION

- ⚠ **RELINE SHALL BE INSTALLED AT TEMPERATURES ABOVE 40 °F (5 °C) AND ALL MATERIAL SHALL BE STORED AT TEMPERATURES ABOVE 40 °F (5 °C) FOR 24 HOURS, PRIOR TO INSTALLATION.**
- ⚠ **THE RECOMMENDED MAXIMUM SERVICE TEMPERATURE FOR RELINE IS 122 °F (50 °C). RELINE SHALL NOT BE DIRECTLY EXPOSED TO FLAME OR RADIANT HEAT SOURCES. GENERALLY, ALL HEATERS, INCL. RADIANT HEATERS SHALL BE SHIELDED AND LOCATED MORE THAN 18" (450 mm) FROM RELINE. CONTACT THE MANUFACTURER OF ANY HEATER OR RADIANT HEATER FOR INSTALLATION DETAILS, HEAT SHIELD REQUIREMENTS AND ALL CLEARANCES FROM RELINE.**
- ⚠ **PROVIDE ¼" CLEARANCE MINIMUM AT EACH END OF ALL CEILING PANELS, ½" CLEARANCE MINIMUM AT TOP OF ALL WALL PANELS AND 1/32" GAP MINIMUM BETWEEN PANELS AT INTERLOCKING JOINTS USING THE RELINE EXPANSION TOOL. RECOMMENDED CLEARANCES ARE BASED ON A MAXIMUM TEMPERATURE FLUCTUATION OF 72 °F (40 °C) AND LENGTHS NOT GREATER THAN 16 FT (4.9m).**
- ⚠ **FOR LENGTHS GREATER THAN 16 FT (4.9m) OR IF RELINE WILL BE SUBJECT TO GREATER TEMPERATURE FLUCTUATIONS, INCREASED CLEARANCES AND OVERSIZED HOLES FOR FASTENERS ARE RECOMMENDED. CONTACT NUFORM® FOR RECOMMENDATIONS TO SUIT OTHER CONDITIONS.**

**ON RECEIVING RELINE MATERIAL, CHECK AGAINST SHIPPING LIST AND NOTE ANY DISCREPANCIES IMMEDIATELY TO NUFORM. Toll Free 1 - 877 - 747 - 9255**



### Nuform Building Technologies Inc.

100 Galcat Drive, Unit 2, Woodbridge, Ontario, Canada, L4L 0B9  
Tel.: 905 652-0001 Toll Free: 1 877 747 WALL (9255)

[www.nuformdirect.com](http://www.nuformdirect.com)



Scan for Typical Details