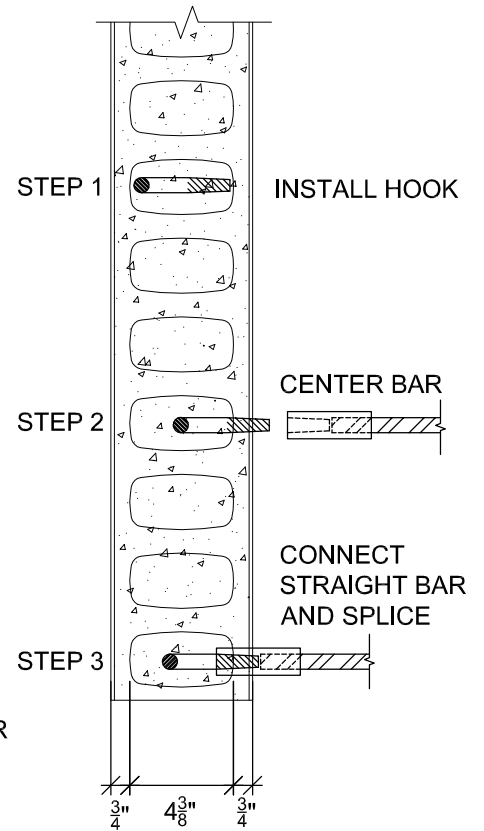
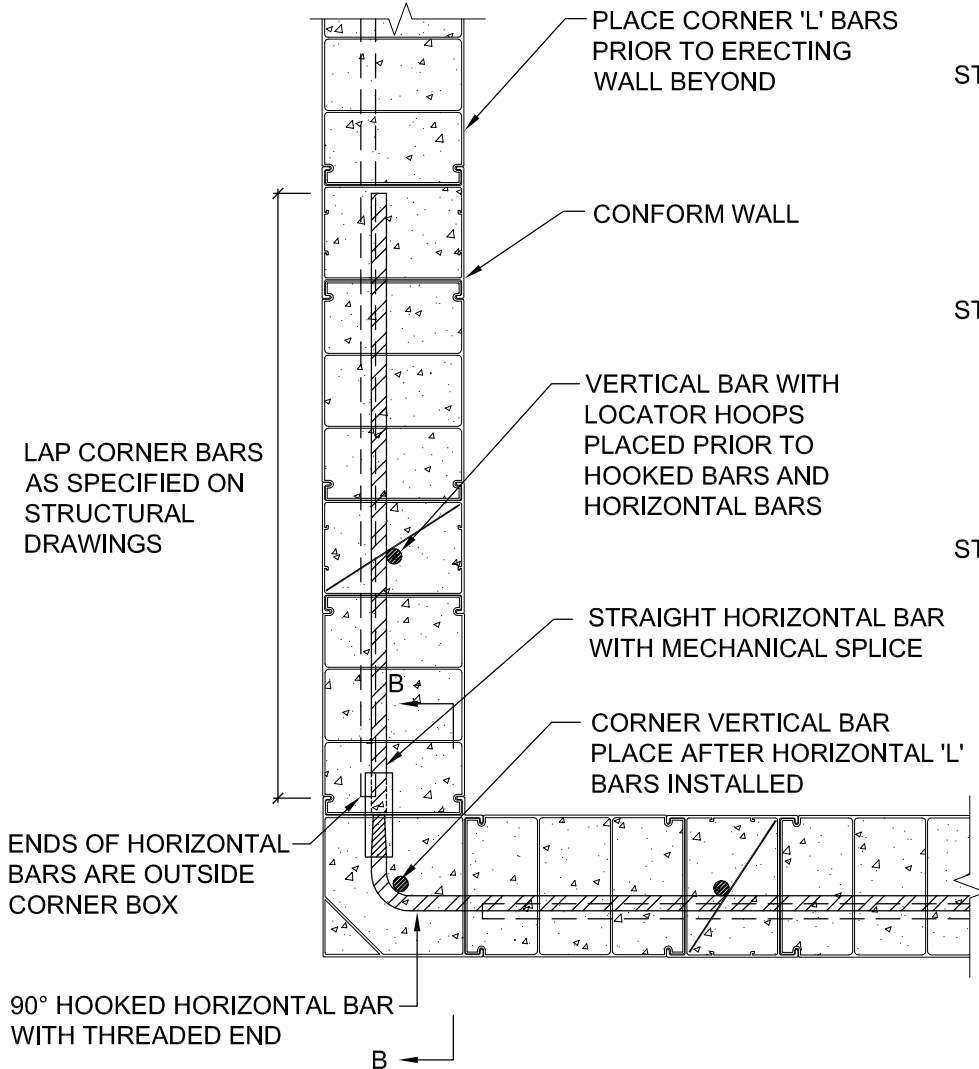


## INSTALLATION PROCEDURES



**SECTION B-B**



**PLAN**

- DETAIL FOR FORMWORK ONLY

- ALL DETAILS, REINFORCING STEEL & CONCRETE MUST BE DESIGNED & CONFIRMED BY PROJECT STRUCTURAL ENGINEER AND / OR PROJECT ARCHITECT.



Nuform Building Technologies Inc.  
1 Regalcrest Court,  
Woodbridge, Ontario, Canada L4L 8P3  
Tel: 905-652-0001 Fax: 905-652-0002  
Toll Free: 1-877-747-9255  
Web Page: www.nuformdirect.com

**CONFORM WALL -  
CORNER 'L' BARS**



DRAWING NO.

**T052**

COPYRIGHT 2008

SCALE:

**1 1/2" : 1'**

REVISION No.:

**R00**