

# IDEALLY SUITED FOR AGRICULTURAL CONSTRUCTION



Ideally suited for agricultural construction in demanding and highly regulated installations, CONFORM, Nuform's wall system, creates valuable energy efficiencies, combining concrete's strength with advanced polymer technology and durability.

In addition, unlike most traditional construction materials, easy-to-install CONFORM wall systems combat moisture, mold, mildew, rot, and farm pests. An advanced polymer finish will neither rust, rot, corrode or peel.

Designed to permit reliable and high quality fast-track construction, our patented systems can include built-in insulation, service raceways, frame openings and trim accessories. The result is clean, bright, finished interior and exterior walls.

Buildings look great in any climate, with proven life-cycle performance.



ENERGY EFFICIENCY MAINTENANCE FREE

## PROVEN COST SAVINGS

Due to its unique modular nature, CONFORM's concrete forming technology permits rapid construction, allowing early occupancy and faster time to operations. CONFORM is virtually maintenance free – and its cost-saving energy efficiency derives from the concrete and insulations combined thermal performance values.



## HOG, CHICKEN AND DAIRY BARN

With CONFORM, maintaining agriculture's demands for stringent hygiene levels in its facilities is more efficient than ever before. Walls can be quickly and easily washed, and are mold-and-mildew resistant, dramatically improving indoor air quality.

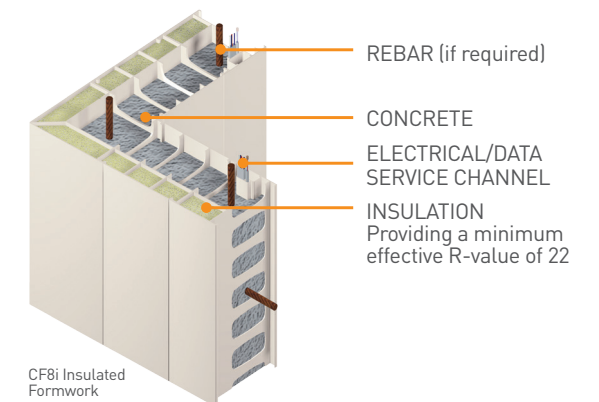
Our wall system's durable construction provides enhanced animal protection from the elements, while at the same time delivering an extremely hygienic and durable wall assembly for this demanding environment. Livestock are kept healthy, with better eventual production; while reducing energy costs.

The benefits are real with a proven track record worldwide.



## THE REVOLUTIONARY STAY-IN-PLACE CONCRETE WALL FORMWORK

- Solid Concrete Construction
- Quick On-Site Assembly
- Proven Cost Saving
- Unparalleled Energy Efficiencies
- Easy to Maintain
- Mold/Mildew Resistant
- Available in 4, 6 and 8" wall forms



**CONFORM IMPROVES DAIRY PARLOUR AIR QUALITY.**

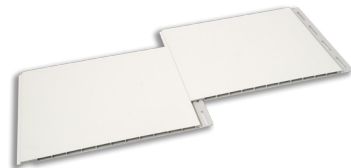


INNOVATIVE, RELIABLE AND DURABLE BUILDING SOLUTIONS FOR GLOBAL CONSTRUCTION MARKETS



DURABLE, COST-EFFECTIVE PANELING SYSTEM FOR RETROFIT & NEW CONSTRUCTION

RELINE 12"



RELINE PRO 18"

Interlocking fastening system for quick and easy installation

Durable, smooth surface for minimal maintenance



Heavy duty slotted fastener leg to accommodate expansion and contraction

Concealed fasteners for a clean finish

INNOVATIVE, LIGHTWEIGHT PANELS THAT FASTEN DIRECTLY TO AN EXISTING WALL OR TRUSS CEILING

### FEATURES

- Quick and easy installation; no gluing required
- Panels fasten directly to an existing wall or truss ceiling
- Will not warp, rust or corrode and never needs to be painted
- Durable finished surface brightens the interior of the building
- Meets Class A interior finish requirements
- Standard and custom lengths available
- Trims and accessories available
- Fast delivery times

When used as a ceiling panel, **RELINE** is the perfect complement to **CONFORM**, our concrete wall forming system for new construction. Ask us about this great innovation!



INNOVATIVE, RELIABLE AND DURABLE BUILDING SOLUTIONS FOR GLOBAL CONSTRUCTION MARKETS

100 Galcat Drive, Unit #2 | Woodbridge, Ontario, Canada | L4L 0B9  
 T 905.652.0001 | TF 1.877.747.WALL (9255) | F 905.652.0002

[www.nuformdirect.com](http://www.nuformdirect.com)

# AGRICULTURAL STRUCTURES