

PREPAINTED ALUMINUM OR GALVANIZED STEEL FLASHING IN 3mm [$\frac{1}{8}$ "]x50mm[2"] DEEP REGLET SAWCUT INTO FACE OF CONFORM

NO SEALANT ABOVE FLASHING

#6x 25mm[1"] PAN HEAD STAINLESS STEEL 18/8 SCREWS WITH NEOPRENE WASHERS AT 667mm[2'-2"] o/c MAX THRU LEGS OF BOX CONNECTORS

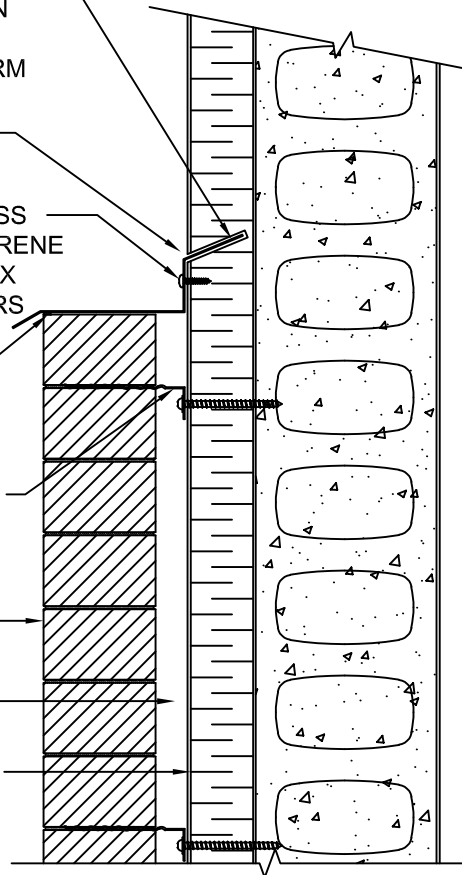
CONTINUOUS SEALANT UNDER DRIP

MASONRY TIES WITH CONCRETE SCREWS, AS REQUIRED

MASONRY VENEER

AIR SPACE

200mm[8"] CF8i WALL



- DETAIL FOR FORMWORK ONLY

- ALL DETAILS, REINFORCING STEEL & CONCRETE MUST BE DESIGNED & CONFIRMED BY PROJECT STRUCTURAL ENGINEER AND / OR PROJECT ARCHITECT.



Nuform Building Technologies Inc.
100 Galcat Drive, Unit #2,
Woodbridge, Ontario, Canada L4L 0B9
Tel: 905-652-0001 Fax: 905-652-0002
Toll Free: 1-877-747-9255
Web Page: www.nuformdirect.com

200mm[8"] CF8i WALL - BRICK VENEER



DRAWING NO.

A335

COPYRIGHT 2024

SCALE:

REVISION No.:

R00