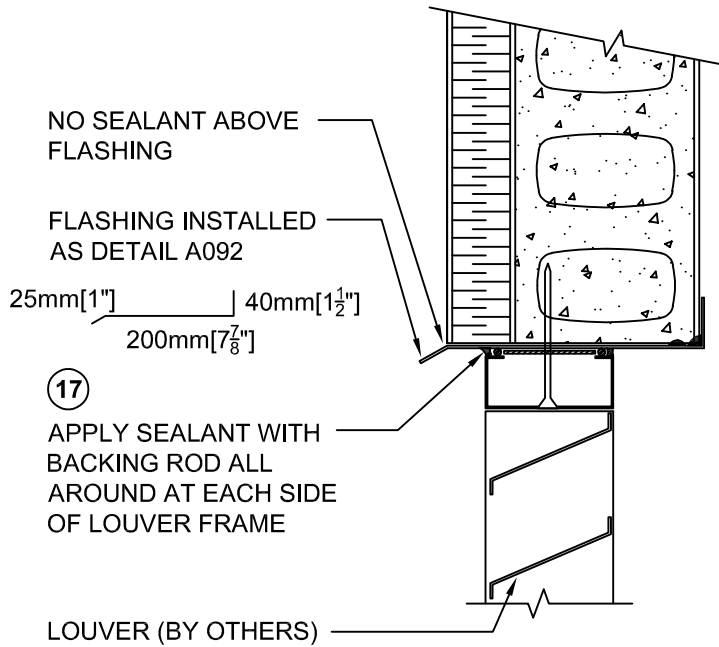
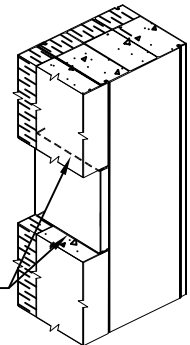


HEADER SECTION



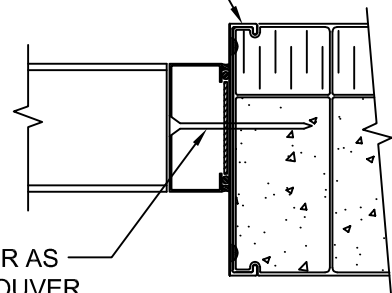
OPENING

14 APPLY 6mm [1/4"] CORNER BEAD OF SEALANT AT TOP AND BOTTOM OF STARTER TO FLASHING AT HEADER AND SILL OF OPENING.



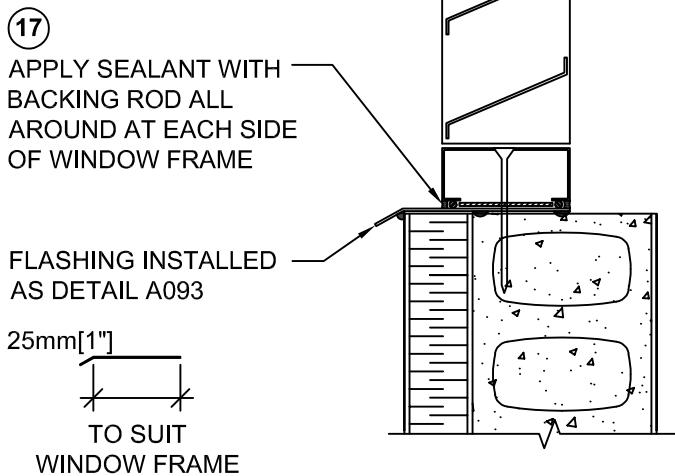
JAMB SECTION

UNCORED CONFORM STARTER INSTALLED AS DETAIL A091



15 ANCHOR LOUVER AS REQUIRED BY LOUVER MANUFACTURER

SILL SECTION



- DETAIL FOR FORMWORK ONLY
 - ALL DETAILS, REINFORCING STEEL & CONCRETE MUST BE DESIGNED & CONFIRMED BY PROJECT STRUCTURAL ENGINEER AND / OR PROJECT ARCHITECT.



Nuform Building Technologies Inc.
 100 Galcat Drive, Unit #2,
 Woodbridge, Ontario, Canada L4L 0B9
 Tel: 905-652-0001 Fax: 905-652-0002
 Toll Free: 1-877-747-9255
 Web Page: www.nuformdirect.com

200mm [8"] CF8i WALL - LOUVER BY OTHERS



DRAWING NO.	
A245	
COPYRIGHT 2024	
SCALE:	REVISION No.:
	R00