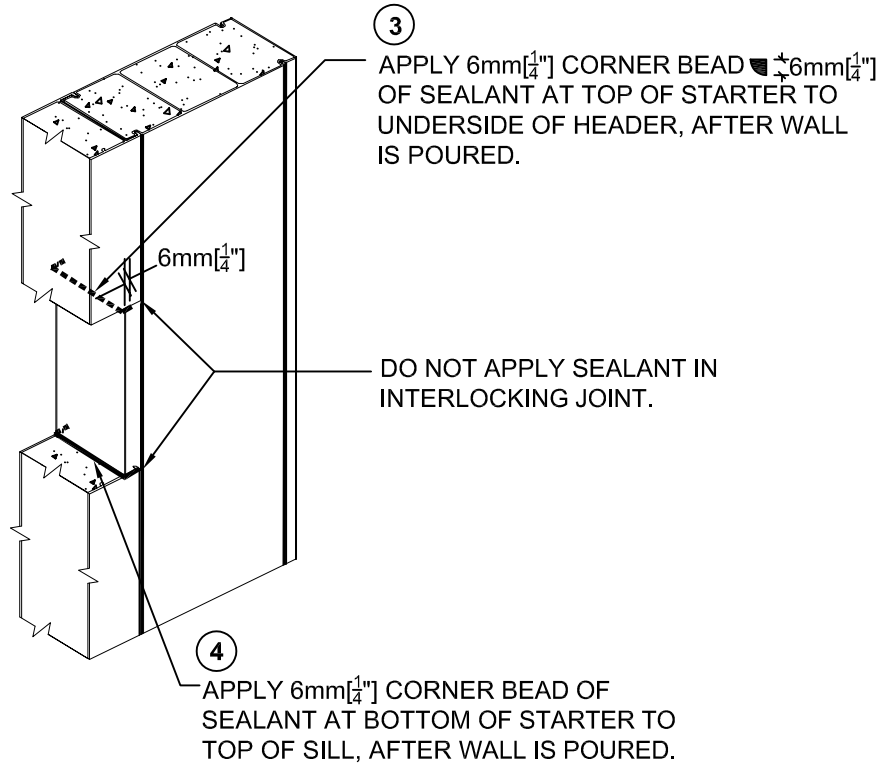
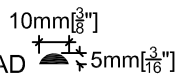


OPENING
N.T.S.



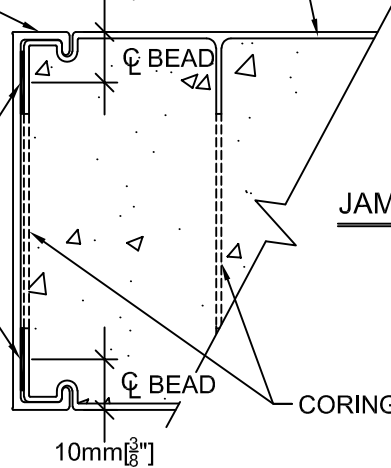
② INSTALL EXTERIOR LEG OF STARTER HOOKED INTO PANEL GROOVE, AND INTERIOR LEG OF STARTER IS SNAPPED INTO PLACE USING RUBBER Mallet. (DO NOT SLIDE STARTER IN PLACE).

① APPLY 10mm [$\frac{3}{8}$ "] FLAT BEAD OF SEALANT FULL HEIGHT TO EACH SIDE OF STARTER.



CONCRETE WALL WITH CONFORM

10mm [$\frac{3}{8}$ "]



- DETAIL FOR FORMWORK ONLY
- ALL DETAILS, REINFORCING STEEL & CONCRETE MUST BE DESIGNED & CONFIRMED BY PROJECT STRUCTURAL ENGINEER AND / OR PROJECT ARCHITECT.



Nuform Building Technologies Inc.
100 Galcat Drive, Unit #2,
Woodbridge, Ontario, Canada L4L 0B9
Tel: 905-652-0001 Fax: 905-652-0002
Toll Free: 1-877-747-9255
Web Page: www.nuformdirect.com

CONFORM WALL OPENING
CONFORM STARTER
AT WINDOW JAMB



DRAWING NO.

A091

COPYRIGHT 2024

SCALE:

REVISION No.:

R00