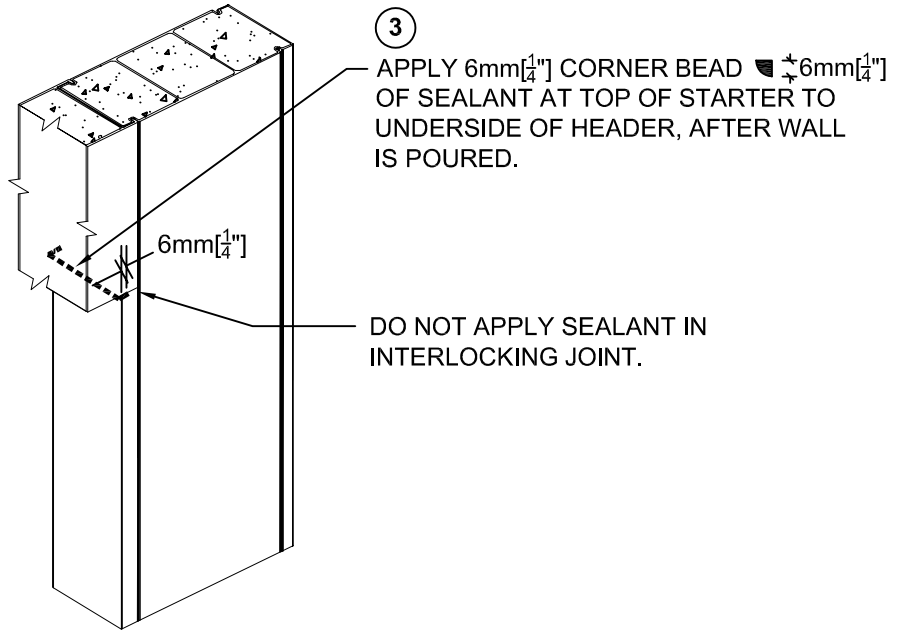


OPENING  
N.T.S.



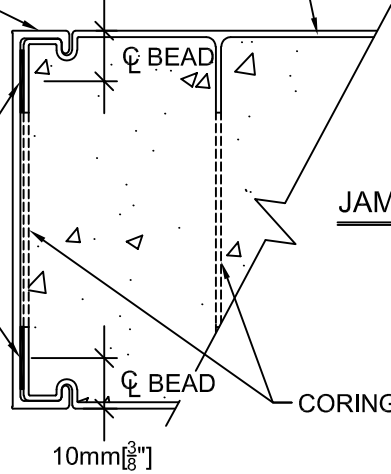
② INSTALL EXTERIOR LEG OF STARTER HOOKED INTO PANEL GROOVE, AND INTERIOR LEG OF STARTER IS SNAPPED INTO PLACE USING RUBBER Mallet. (DO NOT SLIDE STARTER IN PLACE).

① APPLY 10mm [ $\frac{3}{8}$ "] FLAT BEAD OF SEALANT FULL HEIGHT TO EACH SIDE OF STARTER.



CONCRETE WALL WITH CONFORM

10mm [ $\frac{3}{8}$ "]



- DETAIL FOR FORMWORK ONLY  
- ALL DETAILS, REINFORCING STEEL & CONCRETE MUST BE DESIGNED & CONFIRMED BY PROJECT STRUCTURAL ENGINEER AND / OR PROJECT ARCHITECT.



Nuform Building Technologies Inc.  
100 Galcat Drive, Unit #2,  
Woodbridge, Ontario, Canada L4L 0B9  
Tel: 905-652-0001 Fax: 905-652-0002  
Toll Free: 1-877-747-9255  
Web Page: www.nuformdirect.com

## CONFORM WALL OPENING CONFORM STARTER AT DOOR JAMB



DRAWING NO.

A090

COPYRIGHT 2024

SCALE:

REVISION No.:

R00